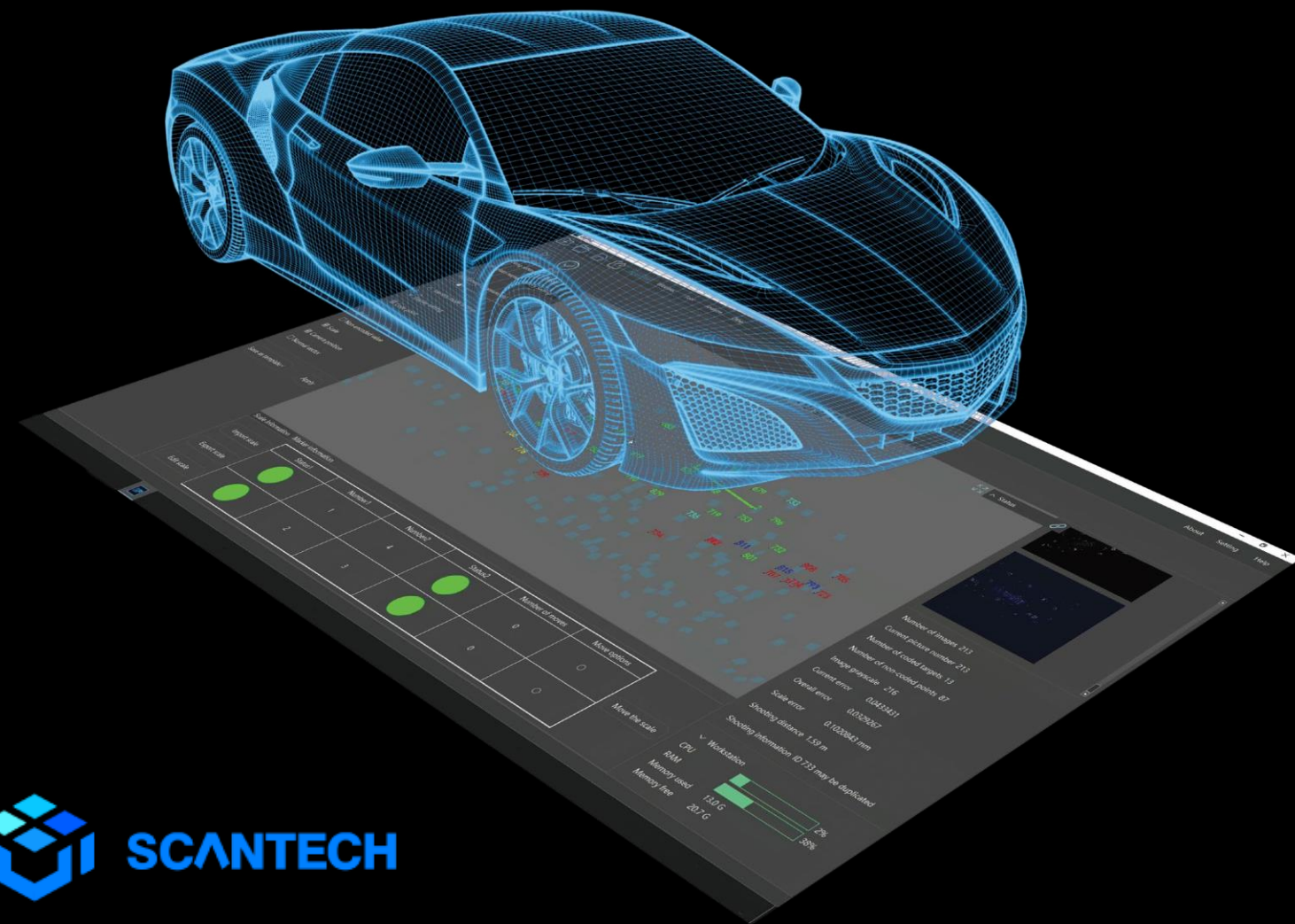


GLOPHO

Photogrammetry Software

Accuracy Enhancer for
Medium-to-large-scale Parts



Photogrammetry Software

Glopho is a powerful photogrammetry software that works in unison with Scantech's 3D measurement systems to conduct accurate coordinate measuring for medium-to-large-scale parts. It brings photogrammetry, real-time display, scale bar management, data analysis, and working environment detection into one intuitive environment to navigate the measuring with ease. It is well-suited for applications in various sectors, including automobile, rail transport and ship-building, power generation, heavy industry, and more.

By taking photos from various angles, metrology professionals can stitch precise 3D coordinates of targets and scale bars with the help of Glopho. These targets form a stable backbone structure for later 3D scanning, helping to eliminate alignment errors accumulated over distance. Thanks to its sophisticated algorithm and architecture, the measurement accuracy can reach 0.012 mm/m.



Ultra-high Precision



Intelligent Indication



Movable Scale Bars to Increase Precision



Adaptor for Feature Measurement



Wireless Connection for Cable-free Photogrammetry



User-friendly Interaction

Seamless Integration into Scantech's 3D Measurement System

Glopho can be paired with the following 3D systems to measure medium-to-large-sized parts in high precision with excellent efficiency.



KSCAN

Experience Diverse Ultimate from Metrology Measurement



AXE

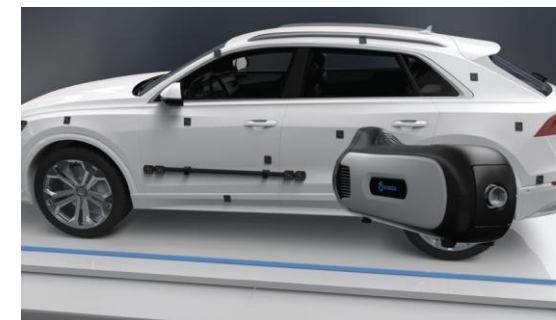
Measuring An Ultra-wide 3D world



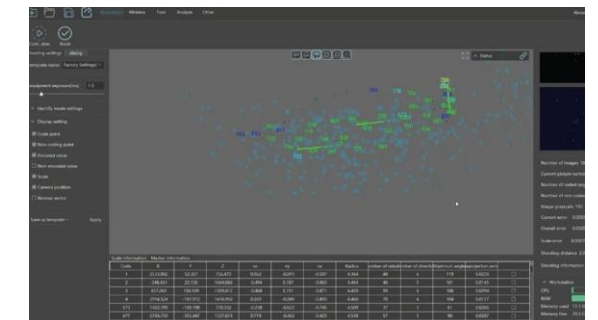
MSCAN

Accuracy Trigger at Large-scale Metrology

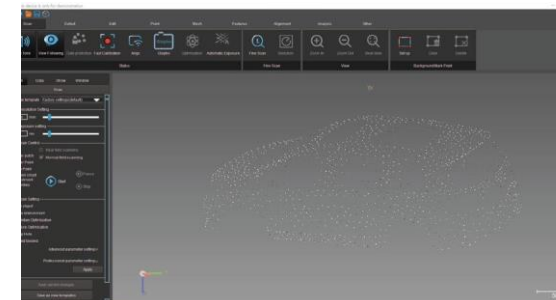
Workflow



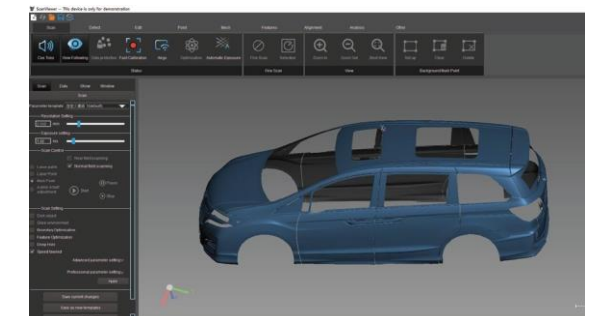
Place the coded targets and scale bars and take photos from different angles and positions. Photos taken show up in Glopho in real time.



Glopho stitches coded and uncoded targets taken in the photos and optimizes the data.



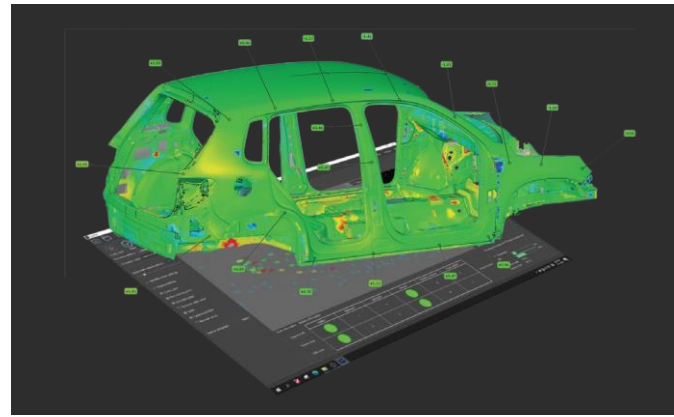
Import coordinate data into 3D scanning software ScanViewer and capture data with Scantech's portable 3D Measurement system.



Generate highly accurate 3D models which can be compared with original CAD models to generate intuitive reports or serve as a data basis for further design.

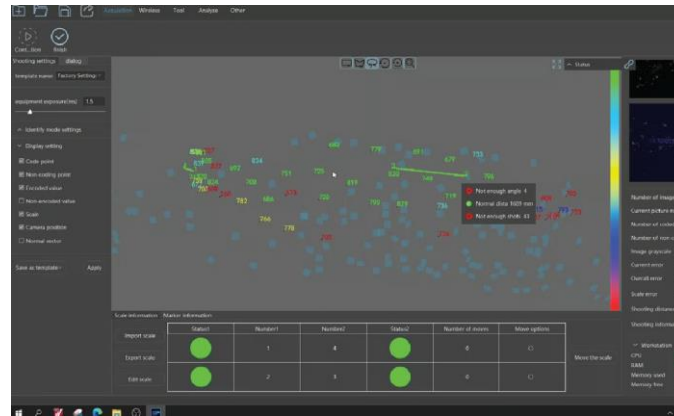
Ultra-high Precision

Glopho offers a complete toolset for all photogrammetry workflows with advanced operational procedure design and a simple user interface. Thanks to its sophisticated algorithms, its coordinate measurement accuracy can be up to 0.012 mm/m. It can automatically exclude targets with high RMS error from calculations to improve accuracy. With robust performance in photogrammetry, it is capable of meeting the requirements of medium-to-large-scale parts.



Intelligent Indication

All the information about shooting, such as shooting distance, shooting angles, and numbers of photos taken, show up intuitively on the interface. With coded targets and scale bars shown in five colors to indicate different levels of data acquisition, users can intuitively monitor the shooting status. When errors occur, intelligent indicators pop up. Therefore, users can adjust shooting accordingly or re-shoot targets without sufficient shooting angles to ensure high-precision results.



Movable and Customized Scale Bars

To further enhance the efficiency and increase precision, Glopho supports the use of multiple scale bars to serve as a datum for capturing data for objects longer than 3 meters. After the data of a scale bar is fully captured and saved, users can choose to move the scale bar to a new position. In this way, the precision can be enhanced without the need for extra scale bars. Thanks to its high flexibility, Glopho is compatible with customized scale bars or those not included with it.



Adaptor for Feature Measurement

It supports simple signaling with standard and customized adaptors for feature measurement. When the process of photogrammetry completes, technicians and engineers can obtain geometric features of the workpiece such as hole boundary, and hole center. It is ideal for measuring inspection tools, holes on sheet metal, and cylindrical parts to elevate the measurement efficiency on large parts.



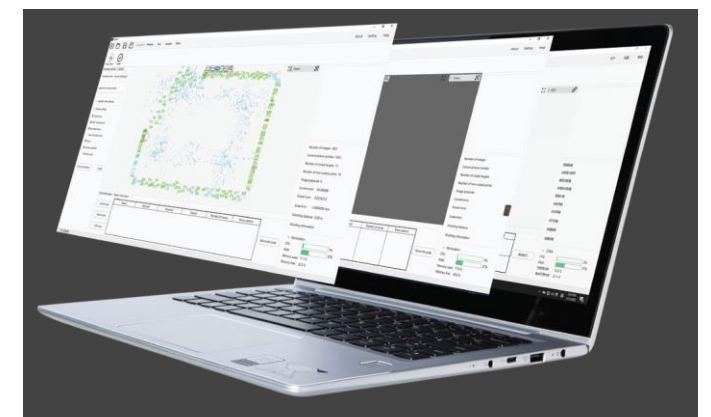
High Flexibility

Glopho can be seamlessly integrated into the high-precision photogrammetry process of Scantech's MSCAN-L15 Photogrammetry System, KSCAN-Magic 3D Laser Scanner, AXE-B17 3D Scanner. By combining it with our wireless communication link AirGo, mobile 3D measurement with no power supply is now possible. Users can take photos from any location they want with maximum freedom of movement and view data on mobile screens.



User-friendly Operation

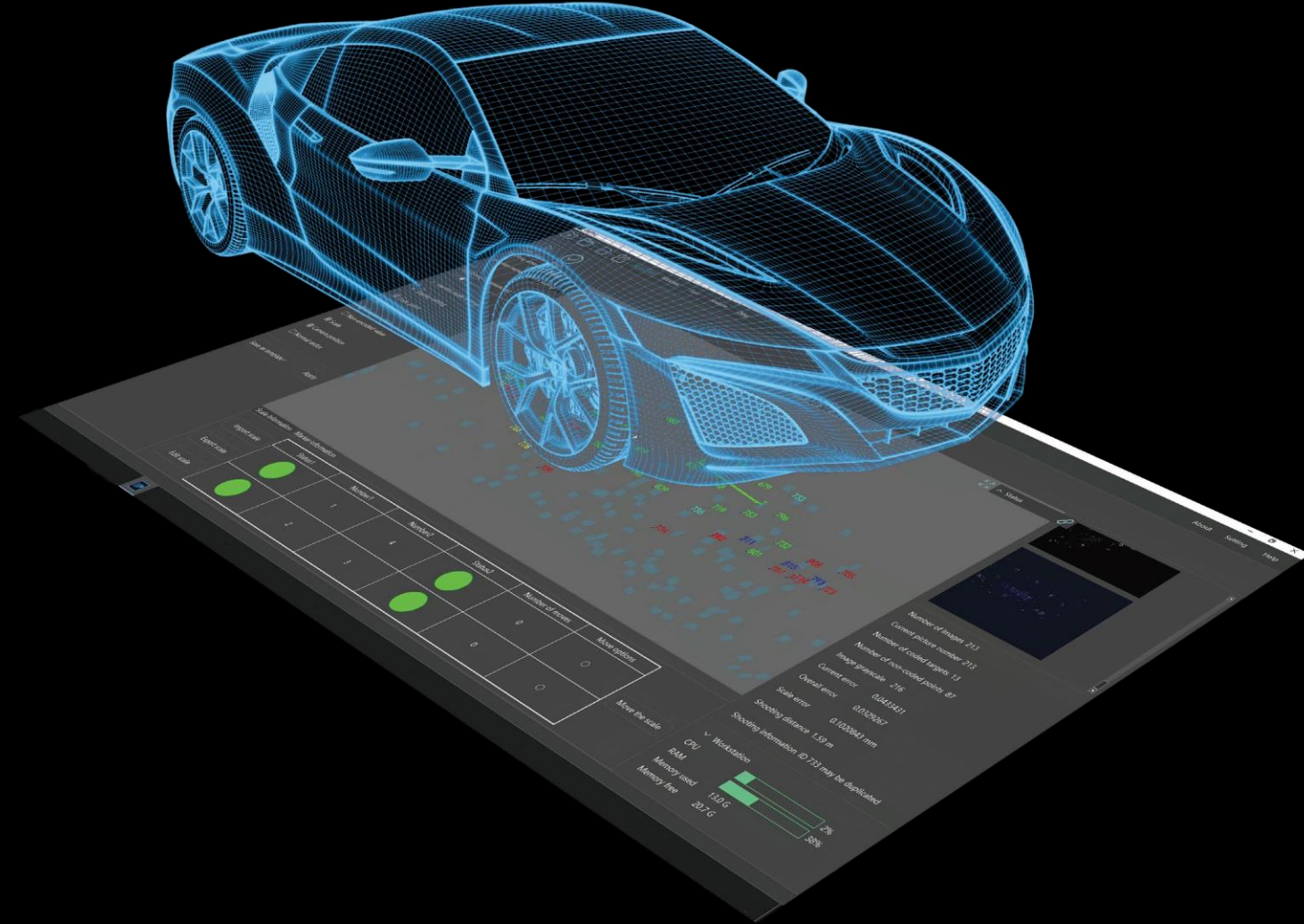
Glopho displays the whole shooting process on the interface so that users can troubleshoot any potential problems. It allows them to resume tasks interrupted by importing project files in one click. With its operating environment diagnostic tool, users can check whether the computer configuration meets the requirements. It also boasts an intuitive user interface and enables users to personalize it by choosing between different layouts.



GLOPHO

Photogrammetry Software

Accuracy Enhancer for
Medium-to-large-scale Parts



Glopho yazılımı hakkında detaylı bilgi ve profesyonel ekibimizden destek almak için;

[BİZE ULAŞIN!](#)

Poligon Mühendislik –
İstanbul

+90 (216) 471 82 82

 info@poligonmuhendislik.com

Poligon Mühendislik –
Bursa

+90 (224) 441 14 82

 www.poligonmuhendislik.com

Takip
Et 